



**UniQuiz**

# STEM Universal Quiz Platform

Identifying the STEM gap as early as grade or primary education level in order to promote Science, Technology, Engineering and Mathematics

## DESKTOP APP USER GUIDE

# Contents

- 6.0 Uniquiz for Desktop Apps ..... 2**
  - 6.1 Available in two desktop versions. .... 2
  - 6.2 Settings..... 2
  - 6.3 Adding your user - Candidate ..... 5
  - 6.4 Revision Mode ..... 6
  - 6.5 Setting a test (Question set) ..... 7
  - 6.5 Testing Mode ..... 8
  - 6.6 User Cloud Account..... 10
  - 6.7 Desktop App Knowledge Check ..... 11

## 6.0 Uniquiz for Desktop Apps

### 6.1 Available in two desktop versions.

1. A comprehensive version (Desktop-Dual) which allows you to do revision, create and distribute answer sets. This mode is recommended for student who would like to revise the content and teachers who want to create tests from the already available questions.
2. The second version is a limited version which is used for taking test only. This version is recommended for testing centers because the student has no option to look at the syllabus content. This version can only load and open question sets.

Both desktop versions use the published database. When you visit the website to download the distribution files, these three components are clearly distinguished.

- The most current published database
- UniquizDesktopApp\_Dual
- UniquizDesktopApp\_Test

### 6.2 Settings

When you start the application, the login splash screen exposes the links to the settings. It is important that you hit the settings right before the application can correctly run. In case you are not sure of the settings, please contact the distribution agent or your systems administrator.

Login screen

Start Page

SETTINGS LINK DB

**Quiz Flash Cards**

**LOGIN**

Group or Class

Your ID

Start New User

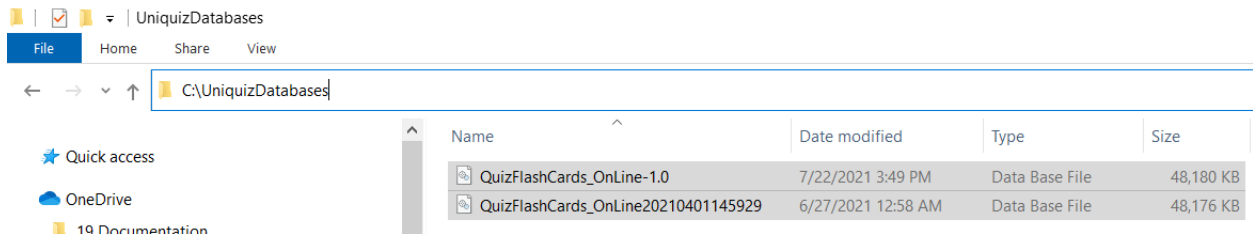
Machine Identity

Datasource

## Important settings

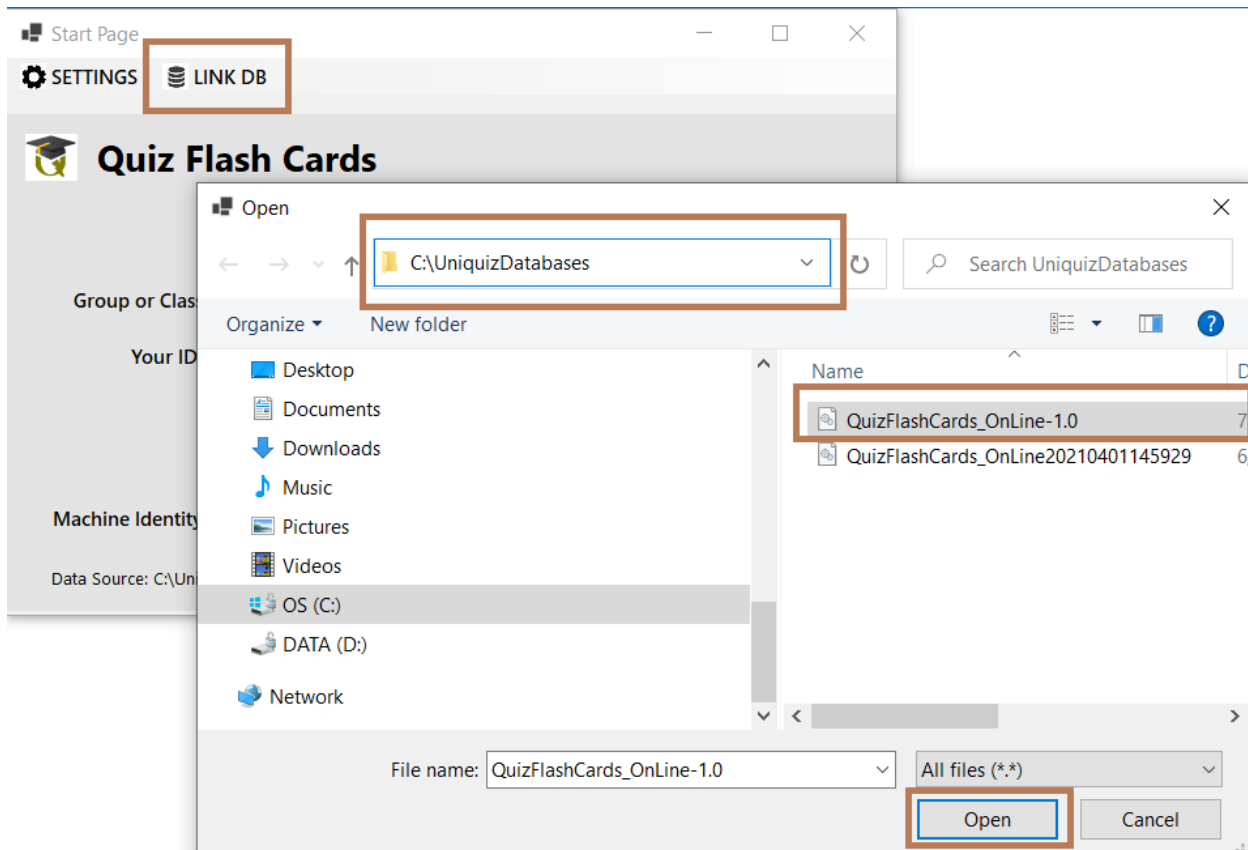
### 1. Db Link

As already noted, the database containing the questions is published separately. When you download the database, you can place it in any directory on your computer. Most likely a directory which you can access. Do not place the database as part of the system files. Db link tells the app which database you are reading. You can have as many databases as possible. In the example below, I have placed my databases in one folder on my C drive (C:\UniquizDatabases)



To link app to the database file

- Click on the LINKDB button
- Locate the file
- Select the file and accept (Open) the selection



When you successfully link app to the database, it will show as the data source at various places.

## 2. Machine Identity

The desktop app uses a license. The license is obtained from the vendor and given to you as a file. You will be directed where to drop the file by the distributor. For purposes of this document, the file is normally placed as part of the system files where the app is installed.

To generate a license for you, you must submit the machine identity. When you open the login screen, it will reveal your machine identity (see login screen)

## 3. Exploring your settings

The SETTINGS button allows you to explore your settings. It can also be used to link the database and other administrative tasks. Do not change settings if you are not sure of the item you are exploring.

The screenshot shows the 'System Settings' application window. It features three main sections:

- Database File:** A text box containing the path 'C:\UniquizDatabases\QuizFlashCards\_OnLine-1.0.db' and a 'Refresh Form' button.
- Data Package:** A 'Serial Number:' label followed by an empty text box and a 'Create Package' button.
- Crypto Property Update:** A dropdown menu for 'Property' with a list of options: 'FlxSourceDbConnection', 'FlxDestinationDbConnection', 'FlexibleXUserId', and 'EncryptedMachineIdentity'. There are 'Show Property' and 'Update Value' buttons next to the dropdown.

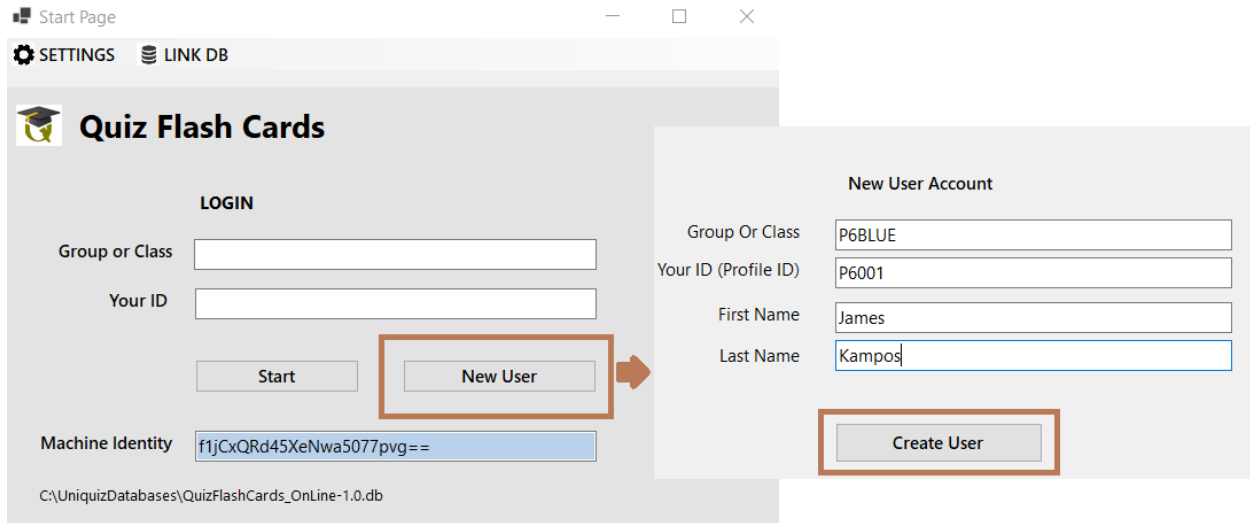
A 'Messages' section is visible at the bottom left of the window.

- The Refresh button will reveal the database and load the list of items you can view
- You can use the “Update DB File” button to change the questions database
- Any changes that affect your Crypto license package may result into malfunctioning of the system if not properly done.

### 6.3 Adding your user - Candidate

Once you successfully connect to a database, you can now add your credentials. Your class or group and your ID. Your credentials will depend on the system admin or established ways of doing things. There is no standard.

If you enter a Class and ID which are not in the database you are linking to, a screen demanding that you create them will show up. You can as well use the “New User” button to create your credentials.



#### Cloud Registered Users

If you want to keep track of your performance, you can apply for a cloud account where you can keep results of your tests, participate in contests, and win awards and scholarships. For details about this arrangement, contact: [marketing@flexiblex.com](mailto:marketing@flexiblex.com), [flexdatapin@gmail.com](mailto:flexdatapin@gmail.com), [sbfsystems@gmail.com](mailto:sbfsystems@gmail.com).

If you are registered in such arrangements, you will be given specific groups and Ids that are registered.

Usually, the testing center that manages your tests and progress will advise or issue you with a card containing these credentials.

#### Task based Ids

You can be given credentials that are spontaneous or temporary for purposes of completing a task such that the person who allocated the task, would want to use those very credentials to check your task. For example, the app can be used for interview purpose. An interview group can be created, and you can be allocated a code to use as your ID.

#### Multiple IDs

You can use multiple IDs if you are not under any institutional arrangement. For example, if you have a personal copy of the app and you want to beat the restrictions on the number of attempts on a test (An Id is allowed up to only 6 attempts on a question set)

## 6.4 Revision Mode

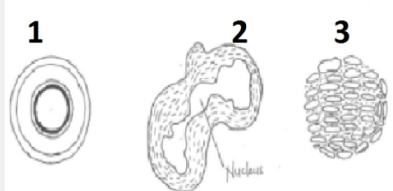
- Questions are organized by **Country, Level, Class, Subject, Syllabus** in that order. One category leads to the other. You must select all of them.

Uniquiz - [Syllabus Content]

REGISTER TAKE TEST REVISION DATA

COUNTRY	LEVEL	CLASS	SUBJECT	SYLLABUS
UGANDA	PRIMARY	PRIMARY-FIVE	SCIENCE	UCSS-P5-005
0017	QN	0017		UCSS-P5-005 UCSS-P5-003 UCSS-P5-001-J01 UCSS-P5-001-J02
PIS-P5-0050	Question	Loam soil is the best for crop growing because		
PIS-P5-0051				

- The questions are listed on the left-hand side. Each question you click on will be displayed in the grid.
- To Reveal the answer, click on the “show me answer” button.

COUNTRY	LEVEL	CLASS	SUBJECT	SYLLABUS
UGANDA	PRIMARY	PRIMARY-SIX	SCIENCE	UCSS-P6-008
PIS-P6-0001	QN	PIS-P6-0010		
PIS-P6-0003	Question	Identify the type of blood cells in the diagram below		
PIS-P6-0004	A	(1) Red blood cell (2) platelets (3) white blood cells.		
PIS-P6-0005	B	(2) Red blood cell (3) white blood cell (1) platelets.		
PIS-P6-0006	C	(1) red blood cell (2) white blood cell (3) platelets		
PIS-P6-0007	D	(3) red blood cell (1) platelets (2) white blood cell		
PIS-P6-0009	Correct Answer	Option_C		
PIS-P6-0010	Explanation	Red blood cell – shaped like biconcave disc, does not have nucleus. White blood cell – it is amoeboid in shape, larger than red blood cells and have nucleus. Platelets – they are blood fragments, non-nucleated and spherical in shape.		
PIS-P6-0013				
PIS-P6-0021		<input type="button" value="Show me the Answer"/>		
PIS-P6-0037		29 Questions		
PIS-P6-0045		Type Question Set Id here		
PIS-P6-JER001		<input type="text"/>		
PIS-P6-JER002		<input type="button" value="Add to Question Set"/>		
PIS-P6-JER003		<input type="button" value="Extract Question Set"/>		
PIS-P6-JER004				
PIS-P6-JER005				
PIS-P6-JER006				
PIS-P6-JER007				
PIS-P6-JER008				
PIS-P6-JER012				
PIS-P6-JER013				
PIS-P6-JER015X14				
PIS-P6-JER016				
PIS-P6-JER017				
PIS-P6-JER018				
PIS-P6-JER020				
PIS-P6-JER021				

The revision mode assumes that you are not interested in challenging yourself but rather checking your knowledge retention.

Each answer is displayed with an explanation. The questions and answers are supplied as they are. You cannot change or edit them.

## 6.5 Setting a test (Question set)

The questions are already grouped by syllabus. However, you may want a few questions from the same syllabus of a set of questions from different syllabi. You can only combine questions from the syllabi of the same class. Do not mix grades or levels in the same question set.

- Step 1: Name your question set. You can use codes or familiar notation to distinguish these sets. For example, lets create a question set – **P6TEST001TERM1**. Put the code in the Question set box.
- Step 2: Click or select a question. Once the question is selected, use “**Add to Question Set**” button to add the selected question to the answer set.
- Step 3: Repeat the second step for each question you want to be added to the set. You can even change the syllabus.

The screenshot shows the Uniquiz interface for setting a question set. The top navigation bar includes 'REGISTER', 'TAKE TEST', 'REVISION', and 'DATA'. The main content area is divided into a list of questions on the left and a detailed view of a selected question on the right. The selected question is 'Why is the left ventricle wall thicker than the right ventricle wall?' with four multiple-choice options (A, B, C, D). The options are:

- A: To prevent the muscle of the heart from bursting due to high pressure of oxygenated blood from the lungs.
- B: To enable stronger muscular contraction that provides force needed to raise blood pressure to enable blood flow at a higher velocity to parts of the body that are far e.g. legs.
- C: To provide more space for blood storage in the heart.
- D: For easy identification of the left ventricle and right ventricle of the heart.

Below the question details, there is a 'Show me the Answer' button, a '29 Questions' indicator, and a section for adding the question to a set. This section includes a text input field for the 'Type Question Set Id here' (containing 'P6TEST001TERM1'), an 'Add to Question Set' button, an 'Extract Question Set' button, and an 'Upload Question Set' button.

- Step4: Extract your test using the “Extract Question Set” button. The reason you want to extract the test is for purposes of distribution.
- Step 5: Store question set files in organized directories.
  - Questions sets (tests) will be extracted into a folder. This method allows you upload as many tests as possible from the same folder.
  - You can keep tests for each term or each section in a separate folder.

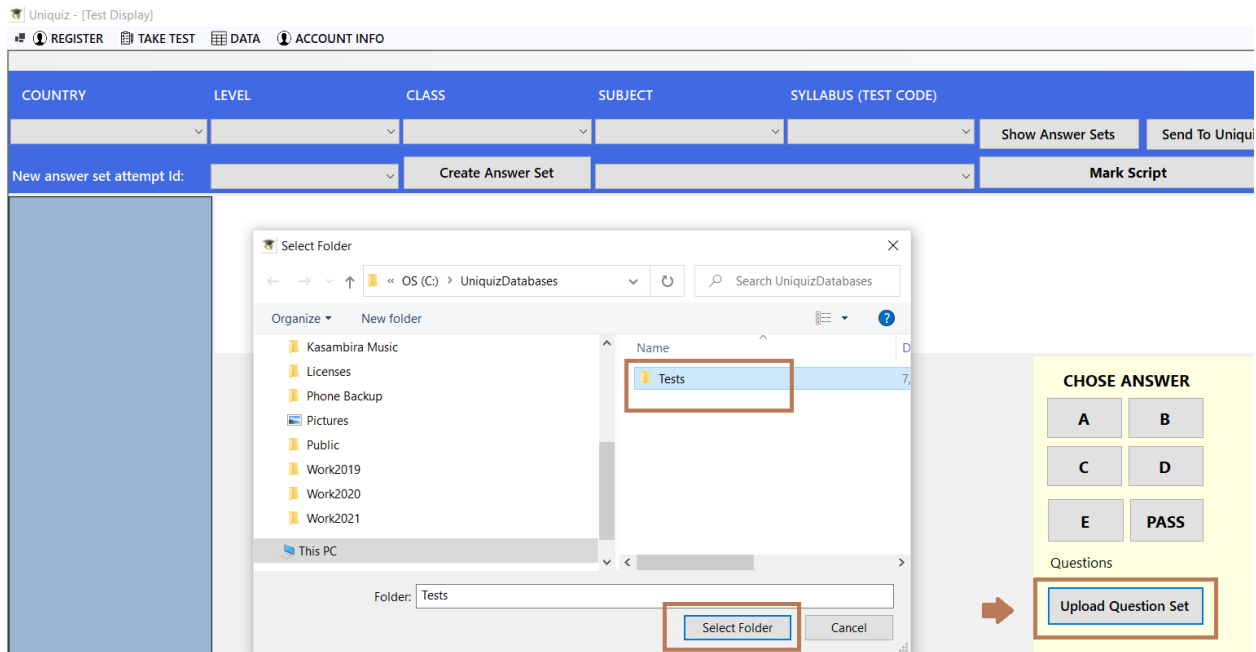


## 6.5 Testing Mode

The test mode is designed for taking tests under supervision. This mode is suitable for testing centers. If you are using the dual mode or the revision mode, the same functions that we are going to discuss are also available with just a few differences.

### Loading Question sets

- We will begin by loading the question set we created in the previous section.



- Locate and select the folder containing the question set files
- All files in the folder will be loaded into the connected database
- Make sure questions that are in the test exist in the database you are connecting to. In other words, use the same published database as the setter.

### Navigation – Question set Vs Answer set

- Just like the revision mode, content is arranged by **country, level, class, subject, and syllabus** or Test. The testing mode does not display syllabus data.
- In addition to the above, question set data will not display until the candidate creates their own answer set. This is done this way because:
  - You cannot directly answer from the source. You create and answer from an **answer set**
  - You may want to make several **attempts**. Therefore, you need the original copy intact. The revision mode allows you to create several attempts. The test mode may not allow more than one attempt
- After selecting the **country, level, class, subject, and test code**, select an attempt Id and then click the “Create Answer Set” button. Your new answer set will be shown in the list.

Uniquiz - [Test Display]

REGISTER TAKE TEST DATA ACCOUNT INFO

COUNTRY	LEVEL	CLASS	SUBJECT	SYLLABUS (TEST CODE)
UGANDA	PRIMARY	PRIMARY-SIX	SCIENCE	P6TEST001TERM1
New answer set attempt id: A001		Create Answer Set		P6001_P6TEST001TERM1_A001

## Answering Questions

Once an answer set is created, you can select it from the dropdown list and the questions will be displayed. The left-hand side panel allows you to navigate to a question by clicking on it or tabbing into the cell for the question number. You can use both the keyboard and mouse to navigate.

- Answers are displayed as options A, B, C, D and sometimes E. The box containing these letters is active and when you click on it, it will assume that is the answer you have chosen. A black and bold frame will be made around your selection.
- You can change your answers by selecting another letter box.
- There are buttons for selecting answers as well, but they generally tend to refresh the whole page and you must again select the question to confirm the change or selection.
- When a question is answered, it will be identified with a black background and a white text.

COUNTRY	LEVEL	CLASS	SUBJECT	SYLLABUS		
UGANDA	PRIMARY	PRIMARY-SIX	SCIENCE	P6TEST001TERM1	Show Answer Sets	Send To Uniquiz
New Answer set Attempt Id: A001D		Create Answer Set		P6001_P6TEST001TERM1_A001D	Mark Script	
<ul style="list-style-type: none"> <li>PIS-P6-0009</li> <li>PIS-P6-0001</li> <li>PIS-P6-0038</li> <li>PIS-P6-0039</li> <li>PIS-P6-0044</li> </ul>		<p><b>QN</b></p> <p><b>Question</b></p> <p><b>A</b></p> <p>B</p> <p>C</p> <p>D</p>	<p><b>PIS-P6-0009</b></p> <p><b>Why is the left ventricle wall thicker than the right ventricle wall?</b></p> <p>To prevent the muscle of the heart from bursting due to high pressure of oxygenated blood from the lungs.</p> <p>To enable stronger muscular contraction that provides force needed to raise blood pressure to enable blood flow at a higher velocity to parts of the body that are far e.g. legs.</p> <p>To provide more space for blood storage in the heart.</p> <p>For easy identification of the left ventricle and right ventricle of the heart.</p>			

## Marking your script

- Once you have answered the questions (usually all will display with black background). Try to go through them all to ensure they are answered.
- Click the "Mark Script" Button
- The label for the button will change to display a percentage of questions answered correctly by count.

Once you mark your script, you cannot change the answers. The system will instantly give you feedback by indicating the questions you got right with green and those you got wrong with red.

## 6.6 User Cloud Account

Your crypto license comes with a connection to a cloud-based database. This connection allows you to access storage services for your marks.

Users with cloud accounts use them as their login Id when opening the system. They can have different groups (which may indicate testing center number or otherwise). Cloud accounts will usually be given to members after a specific subscription or affiliation with a testing center.

The use of a cloud account is to simply store your results. Once the results are stored, then any of the following may be done:

1. You can enter competition by answering specific tests that may be taken at a testing center.
2. You can have access to an expert to analyze your progress and send you feedback on how to balance your knowledge.
3. Build your academic profile for future reference.

Sending your data to your cloud account is not a big task. Once you have marked your script, click the “Send to Uniquiz” button as shown below.

COUNTRY	LEVEL	CLASS	SUBJECT	SYLLABUS (TEST CODE)	Buttons
UGANDA	PRIMARY	PRIMARY-SIX	SCIENCE	P6TEST001TERM1	Show Answer Sets <b>Send To Uniquiz</b>
New answer set attempt id: A001		Create Answer Set	P6001_P6TEST001TERM1_A001		40%

Item ID	Question	Options	Correct Answer	Explanation
PIS-P6-0009	Qn	PIS-P6-0039		
	Question	Assess the difference between vertebrates and invertebrates among the following.		
	A	Vertebrates have no spine while invertebrates have a spine.		
	B	Vertebrates have back bone while invertebrates have no back bone.		
	C	Vertebrates have hydrostatic skeleton while invertebrates have exo-skeleton.		
	D	Vertebrates have an exoskeleton while invertebrates have an endo-skeleton.		
	Correct Answer	Option_B		
	Explanation	Vertebrates are animals with backbones (spine) or vertebral column. Invertebrates are animals without a backbone (spine) or vertebral column.		

- Check your cloud using the ACCOUNT INFO menu item

REGISTER TAKE TEST DATA **ACCOUNT INFO**

COUNTRY: UGANDA

BankDetails

SETTINGS **ACCOUNT INFO**

Welcome: P6B001

Please note. Although you have successfully posted your marks, your Account is not registered for banking of your marks. Please contact an Agent or email sbfsystems@gmail.com and request to be registered.

The current price per question answered correctly is UShs. 25

PRIMARY-SIX Bank Balance = UShs. 75

07-24-2021 Passed: 3 Failed: 2 Result: 60 %P6B001\_P6TEST001TERM1\_A001

## 6.7 Desktop App Knowledge Check

1. How many versions of the desktop app and what makes them different?
2. Why is the database containing questions published separately and how can you obtain it?
3. How do you link the database to the app and how do you check whether you have properly linked the two?
4. What settings item do you send to the vendor to obtain a license and where do you find it?
5. What two items help to identify you as a user?
6. What are the key differences between the Revision mode and the Test mode of the desktop App?
7. When creating a question set, how would you write a question set ID that you can remember?
8. How many question sets can you put under one folder?
9. When creating a question set, should you mix questions from various classes and levels?
10. When you want to load a question set, do you select the question set file or the folder (directory) containing the file(s)?
11. How many attempts can the Test version of the desktop allow you?
12. Why would a user need a cloud account?
13. How would a user obtain a cloud account?
14. What account information am I likely to see if I reveal the details using ACCOUNT INFO button?